

VICTRIX PRO

MANUFACTURED BY:



- Stainless Steel heat exchanger
- High heating outputs
- High efficiency condensing technology
- 55 kW to 120 kW output
- Reduced energy consumption
- Very high modulation range up to 1:10
- Cascade installation of up to 5 boilers
- Indoor and outdoor installation



HUNT
HEATING

2 YEAR*
WARRANTY



MAIN OPTIONS

CRONO 7 - 3.021622
External Sensor - 3.014083
Anti-freeze protection (-15°C) - 3.017324.

MEASUREMENTS

Victrix Pro 55 - 946 x 450 x 457 (H x W x D) mm
Victrix Pro 80 - 1140 x 600 x 497 (H x W x D) mm
Victrix Pro 100/120 - 1140 x 600 x 627 (H x W x D) mm

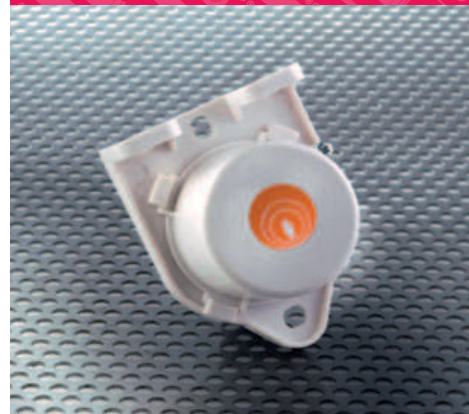
FLUE KIT

Horizontal concentric kit 80/125 - 3.025422
(required for external installation).

CRONO 7



EXTERNAL SENSOR



SHOWROOM

11 Fiveways Boulevard
Keysborough
VIC 3173

PHONE 1300 00 1800

FAX (+613) 9798 5133

enquiries@huntheat.com.au



HUNT HEATING
The smart choice.

www.huntheat.com.au

| Technical data | Unit of measurement | VICTRIX PRO 55 1 A | VICTRIX PRO 80 1 A | VICTRIX PRO 100 1 A | VICTRIX PRO 120 1 A |
|---|---------------------|--------------------|--------------------|---------------------|---------------------|
| Code | N.G. | 3.024493 | 3.024494 | 3.024495 | 3.024496 |
| CE certificate | | 0051CO4405 | 0051CO4405 | 0051CO4405 | 0051CO4405 |
| Nominal gas consumption | MJ/h | 204,9 | 300,7 | 368,9 | 455,9 |
| Minimum gas consumption | MJ/h | 21,9 | 30,3 | 39,0 | 45,6 |
| Maximum nominal heat output (80/60 °C) | kW | 49,9 | 73,0 | 90,0 | 111,0 |
| Minimum nominal heat output (80/60 °C) | kW | 5,0 | 7,2 | 9,4 | 11,0 |
| Maximum nominal heat output (50/30 °C) | kW | 54,8 | 80,3 | 98,8 | 121,7 |
| Minimum nominal heat output (50/30 °C) | kW | 5,5 | 8,1 | 10,5 | 12,2 |
| Useful nominal efficiency (80/60 °C) | % | 97,3 | 97,0 | 97,5 | 97,3 |
| Useful partial efficiency (80/60 °C) | % | 91,2 | 94,8 | 96,2 | 96,4 |
| Useful nominal efficiency (50/30 °C) | % | 106,8 | 106,6 | 107,0 | 106,7 |
| Useful partial efficiency (50/30 °C) | % | 99,7 | 106,9 | 107,4 | 107,2 |
| Useful nominal efficiency (40/30 °C) | % | 107,4 | 107,3 | 107,4 | 107,2 |
| Useful partial efficiency (40/30 °C) | % | 103,5 | 107,2 | 107,6 | 107,5 |
| Stack losses with burner on 100% Pn (80/60 °C) | % | 1,8 | 2,2 | 1,9 | 2,0 |
| Stack losses with burner OFF | % | 0,02 | 0,01 | 0,01 | 0,01 |
| Casing losses with burner ON 100% Pn (80/60 °C) | % | 0,8 | 0,7 | 0,6 | 0,7 |
| Casing losses with burner OFF | % | 0,27 | 0,3 | 0,37 | 0,25 |
| NOx class | | 5 | 5 | 5 | 5 |
| Weighted NOx | mg/kWh | 39,0 | 25,0 | 20,0 | 33,0 |
| Weighted CO | mg/kWh | 15,0 | 16,0 | 12,0 | 18,0 |
| Gas flow rate to burner at max. and min. heat output with methane (G20) | m ³ /h | 4,89 - 0,52 | 7,18 - 0,72 | 8,80 - 0,93 | 10,88 - 1,09 |
| Maximum fan available head (max/min) | Pa | 110/1 | 230/6 | 208/4 | 145/5 |
| Flue exhaust mass flow rate at nominal heat output (N) | Kg/h | 73 | 103 | 131 | 160 |
| CO ₂ at nominal/minimum heat output (N) | | 9,40 / 9,10 | 9,85 / 8,85 | 9,45 / 8,90 | 9,60 / 9,00 |
| CO/CO ₂ at nominal heat output (N) | | 0,00134 | 0,00195 | 0,00153 | 0,00162 |
| Maximum fume temperature | °C | 52 | 62 | 54 | 56 |
| Maximum operating temperature | °C | 90 | 90 | 90 | 90 |
| Heating system adjustable temperature | °C | 20- 85 | 20 - 85 | 20 - 85 | 20 - 85 |
| Maximum operating pressure of heating circuit | bar | 4,4 | 4,4 | 4,4 | 4,4 |
| Electric power | V/Hz | 230 - 50 | 230 - 50 | 230 - 50 | 230 - 50 |
| Max power supply | W | 155 | 195 | 285 | 345 |
| Electrical insulation rating | IP | X5D | X5D | X5D | X5D |
| Empty weight | kg | 51,4 | 81,0 | 95,9 | 102,5 |
| Boiler water capacity | litres | 2,8 | 4,0 | 10,1 | 11,7 |

Horizontal concentric kit 80/125 - 3.025422 (required for external installation)
