

## IMMERGAS SE EXTERNAL BOILER

MANUFACTURED BY:

 **IMMERGAS**

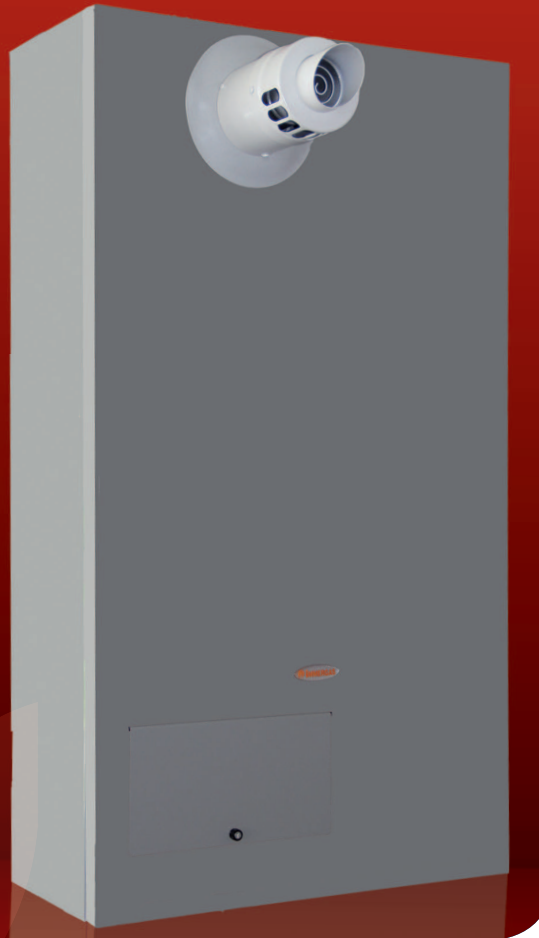
Wall hung traditional hydronic system boiler for outdoor installation

- Sealed room fan assisted model with a 36 kW heat output
- Compact dimensions
- Automatic system by-pass
- D.H.W. Storage Tank (optional)
- Electronic control board microprocessor driven
- Electronic ignition and full modulation
- Diagnostic and performance display
- Intelligent External Controller CAR<sup>v2</sup> with outside sensor (optional)



**HUNT**  
HEATING

**2 YEAR\***  
WARRANTY



### MAIN OPTIONS

CAR<sup>v2</sup> - 3.021395  
External Sensor - 3.014083  
Anti-freeze protection (-15°C) - 3.017324.

### MEASUREMENTS

1000 x 555 x 255 (H x W x D) mm  
Empty appliance weight - 45 kg.

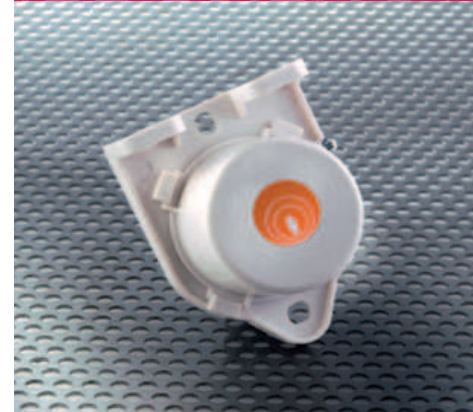
### MAIN FLUE KITS

Vertical concentric kit 60/100 - 3.023758.

CAR<sup>v2</sup>



EXTERNAL SENSOR



 **SAI GLOBAL**

### SHOWROOM

11 Fiveways Boulevard  
Keysborough  
VIC 3173

PHONE 1300 00 1800

FAX (+613) 9798 5133

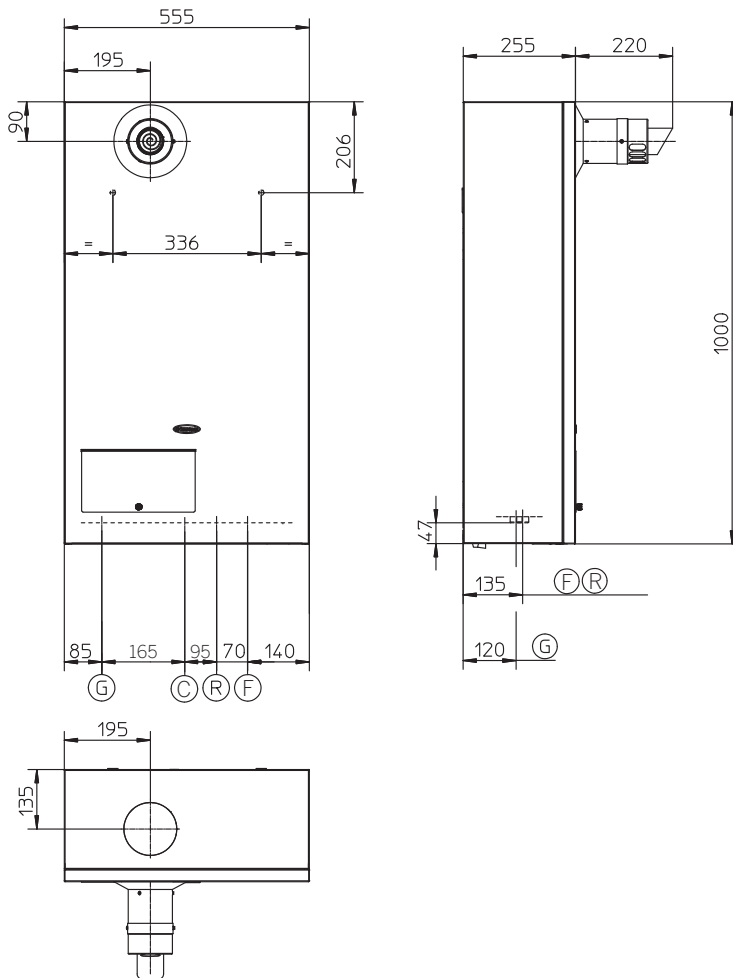
enquiries@huntheat.com.au



**HUNT HEATING**  
The smart choice.

[www.huntheat.com.au](http://www.huntheat.com.au)

Model	Code NG./LPG	Heat output kW	Efficiency at nom. heat output	Protection index
SE 32 kW	IMG SE 32+ E NG IMG SE 32+ E LPG	36	87.3%	IPX5D
COMBUSTION PARAMETERS				
			NG [G20]	LPG [G30]
Supply Pressure		kPa	1.0	2.8
Flue temperature at nominal output		°C	67	68
TECHNICAL DATA				
Heat output NG		mJ/h (kW)	128.5 (35.7)	
Heat output LPG		mJ/h (kW)	128.5 (35.7)	
Burner pressure maximum NG/LPG		kPa	0.70 / 2.10	
Burner pressure minimum NG/LPG		kPa	0.19 / 0.55	
Efficiency 80/60 Nom./Min.		%	87.30	
Efficiency 50/30 Nom./Min.		%	93.20	
Adjustable central heating temperature		°C	35 - 85	
Expansion vessel factory-set pressure		bar	1	
Pressure relief setting		bar (psi)	3 (44)	
Expansion vessel capacity		L	10	
Head available with 1000 l/h flow rate		kPa (m H <sub>2</sub> O)	30.2 (3.1)	
Electrical connection		V/Hz	230 / 50	
Installed electric power		W	180	



**Key:**

- G - Gas supply (not supplied as standard)
- R - Return - CH
- F - Flow - CH
- C - Cold fill

Height (mm)	Width (mm)	Depth (mm)
1000	555	255
CONNECTIONS		
CORD INLET	GAS	SYSTEM
C	G	R F
1/2"	3/4"	3/4" 3/4"

