

INTEC EXTERNAL COMBI BOILERS

MANUFACTURED BY:

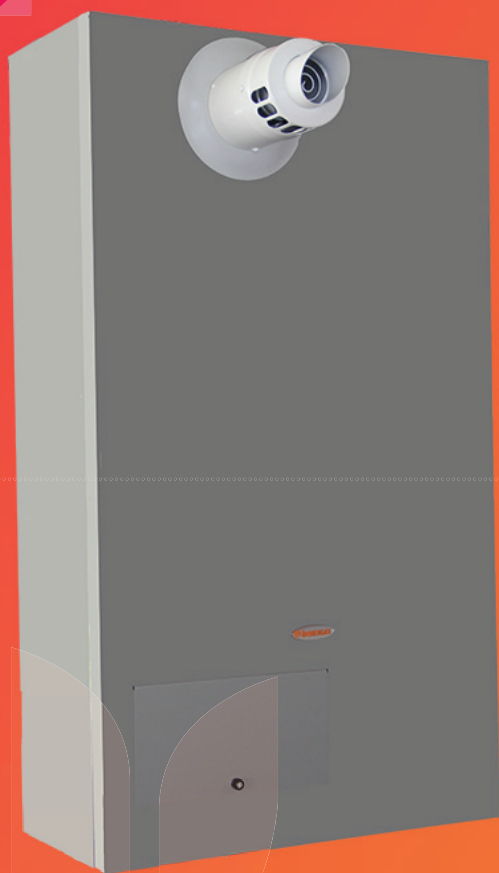


- Factory fitted external case
- Stainless steel condensing heat exchanger
- 1:5 Modulation Rate
- IPX5D electrical safety
- Built in Frost Protection
- Grundfos 7m Pump Module
- Factory fitted plug and electrical lead
- Solar compatible
- Intelligent Management Interface
- Dedicated "secure" floor heating parameter
- 3 Years Parts & Labour Warranty
- 10 Years Manufacturers Heat exchanger warranty



HUNT
HEATING

3 YEAR*
WARRANTY



MODELS

InTec 12kW System
InTec 30kW System

MEASUREMENTS

990 (H) x 470 (W) x 310 (D) mm

CAR V2



EXTERNAL SENSOR



SHOWROOM

11 Fiveways Boulevard
Keysborough
VIC 3173

PHONE 1300 00 1800

FAX (+613) 9798 5133

enquiries@huntheat.com.au



HUNT HEATING
The smart choice.

www.huntheat.com.au

		Intec 30 Combi
Norminal heat input D.H.W	MJ/h (kW)	121.6 (30.4)
Nominal heat input HEATING (NG/LPG)	MJ/h (kW)	121.6 (30.4)
Minimum heat input D.H.W	MJ/h (kW)	23.6 (5.9)
Minimum heat input HEATING (NG/LPG)	MJ/h (kW)	23.6 (5.9)
Norminal heat output D.H.W	kW	30
Nominal heat output HEATING (NG/LPG)	kW	30
Minimum heat output D.H.W	kW	5.7
Minimum heat output HEATING (NG/LPG)	kW	5.7
Minimum D.W.H. circuit pressure	bar	0.3
Minimum D.H.W. withdrawl	l	1.5
D.H.W. production in continuous service (DT=30°C)	l/min	14.3
D.H.W. production in continuous service (DT=25°C)	l/min	17.2
* Efficiency 80/60 Nom./Min.	%	98.6/96.7
* Efficiency 50/30 Nom./Min.	%	108.0/105.9
* Efficiency 40/30 Nom./Min.	%	104.0/106.0
Heat loss at casing with burner On/Off	%	0.2/0.48
Heat loss at flue with burner On/Off	%	1.2/0.01
Central heating circuit max. operating pressure	kPa	300
Central heating circuit max. operating temperature	°C	90
Adjustable central heating temperature	°C	20-85
System expansion vessel total volume	l	8.0
Expansion vessel factory-set pressure	bar	1
Water content in generator	l	2.30
Available head ar 1000 l/h flow rate	kPa (m H ₂ O)	26.4 (2.7)
Weight of full boiler	kg	41.1
Weight of empty boiler	kg	38.8
Electrical connection	V/Hz	230/50
Power input	A	0.66
Installed electric power	W	140
Pump consumption	W	92
Fan power consumption	W	27
NO _x class		5
Weighted NO _x	mg/kWh	36.0
Weighted CO	mg/kWh	27.0
Electrical protection index		IPX5D
Standard frost protection	°C	-5