

## INTEC BOILERS

MANUFACTURED BY:



- Factory fitted external case
- Stainless steel condensing heat exchanger
- 1:5 Modulation Rate
- IPX5D electrical safety
- Built in Frost Protection
- Grundfos 7m Pump Module
- Factory fitted plug and electrical lead
- Solar compatible
- Intelligent Management Interface
- Dedicated "secure" floor heating parameter
- 3 Years Parts & Labour Warranty
- FREE upgrade to 5 Year warranty if you purchase a premier pack
- 10 Years Manufacturers Heat exchanger warranty



**HUNT**  
HEATING

**3 YEAR\***  
**WARRANTY**



### MODELS

InTec 12kW System  
InTec 30kW System  
InTec 30kW Combi

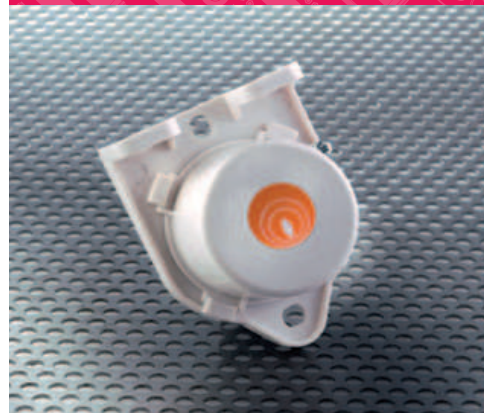
### MEASUREMENTS

Internal - 720 (H) x 440 (W) x 300 (D) mm  
External - 990 (H) x 470 (W) x 310 (D) mm

### CAR V2



### EXTERNAL SENSOR



### SHOWROOM

11 Fiveways Boulevard  
Keysborough  
VIC 3173

PHONE 1300 00 1800

FAX (+613) 9798 5133

[enquiries@huntheat.com.au](mailto:enquiries@huntheat.com.au)



**HUNT HEATING**  
The smart choice.

[www.huntheat.com.au](http://www.huntheat.com.au)

		Intec 12 System	Intec 30 System	Intec 30 Combi
Norminal heat input D.H.W	MJ/h (kW)	-	-	121.6 (30.4)
Nominal heat input HEATING (NG/LPG)	MJ/h (kW)	49.2 (12.3)	121.6 (30.4)	121.6 (30.4)
Minimum heat input D.H.W	MJ/h (kW)	-	-	23.6 (5.9)
Minimum heat input HEATING (NG/LPG)	MJ/h (kW)	9.8 (2.5)	23.6 (5.9)	23.6 (5.9)
Norminal heat output D.H.W	kW	-	-	30
Nominal heat output HEATING (NG/LPG)	kW	12.0	30.0	30
Minimum heat output D.H.W	kW	-	-	5.7
Minimum heat output HEATING (NG/LPG)	kW	2.3	5.7	5.7
Minimum D.W.H. circuit pressure	bar	-	-	0.3
Minimum D.H.W. withdrawl	l	-	-	1.5
D.H.W. production in continuous service (DT=30°C)	l/min	-	-	14.3
D.H.W. production in continuous service (DT=25°C)	l/min	-	-	17.2
* Efficiency 80/60 Nom./Min.	%	97.4/93.5	98.6/96.7	98.6/96.7
* Efficiency 50/30 Nom./Min.	%	107.0/102.7	108.0/105.9	108.0/105.9
* Efficiency 40/30 Nom./Min.	%	107.1/107.1	109.0/106.0	104.0/106.0
Heat loss at casing with burner On/Off	%	0.3/0.88	0.2/0.48	0.2/0.48
Heat loss at flue with burner On/Off	%	2.3/0.02	1.2/0.01	1.2/0.01
Central heating circuit max. operating pressure	kPa	300	300	300
Central heating circuit max. operating temperature	°C	90	90	90
Adjustable central heating temperature	°C	20 - 85	20 - 85	20-85
System expansion vessel total volume	l	8.0	8.0	8.0
Expansion vessel factory-set pressure	bar	1	1	1
Water content in generator	l	2.65	2.30	2.30
Available head ar 1000 l/h flow rate	kPa (m H <sub>2</sub> O)	17.1 (1.7)	26.4 (2.7)	26.4 (2.7)
Weight of full boiler	kg	35.65	41.1	41.1
Weight of empty boiler	kg	33.0	38.8	38.8
Electrical connection	V/Hz	230/50	230/50	230/50
Power input	A	0.54	0.66	0.66
Installed electric power	W	120	140	140
Pump consumption	W	89	92	92
Fan power consumption	W	17	27	27
NO <sub>x</sub> class		5	5	5
Weighted NO <sub>x</sub>	mg/kWh	29.0	36.0	36.0
Weighted CO	mg/kWh	20.4	27.0	27.0
Electrical protection index		IPX5D	IPX5D	IPX5D
Standard frost protection	°C	-5	-5	-5