

IMMERGAS HE EXTERNAL COMBI BOILER

MANUFACTURED BY:

 **IMMERGAS**

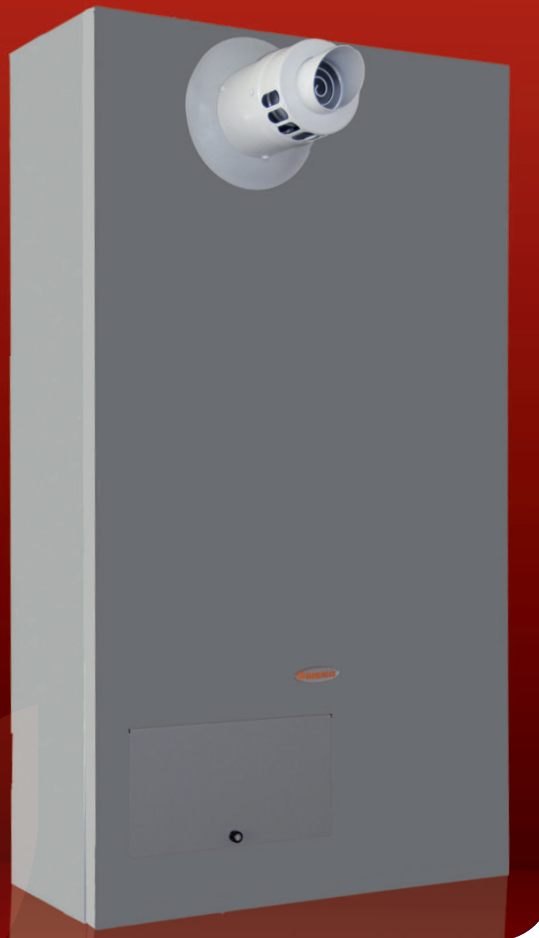
Wall-hung combi condensing boiler for outdoor installation, for high temperature

- Heat output of 35 kW
- D.H.W. output 35 kW
- Compact dimensions
- Designed for high temperature heating systems
- Pre-arranged for functioning in multi-zone heating systems
- Easy to use boiler interface
- Automatic system by-pass
- LED diagnostic and functioning display



HUNT
HEATING

2 YEAR*
WARRANTY



MAIN OPTIONS

CAR^{v2} - 3.021395
External Sensor - 3.014083
Anti-freeze protection (-15°C) - 3.017324.

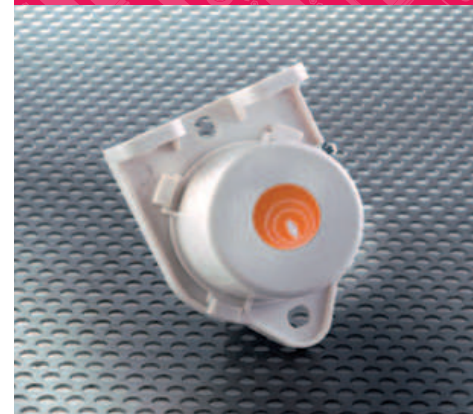
MEASUREMENTS

1000 x 555 x 255 (H x W x D) mm
Empty appliance weight - 45 kg.

CAR^{v2}



EXTERNAL SENSOR



 **SAI GLOBAL**

SHOWROOM

11 Fiveways Boulevard
Keysborough
VIC 3173

PHONE 1300 00 1800

FAX (+613) 9798 5133

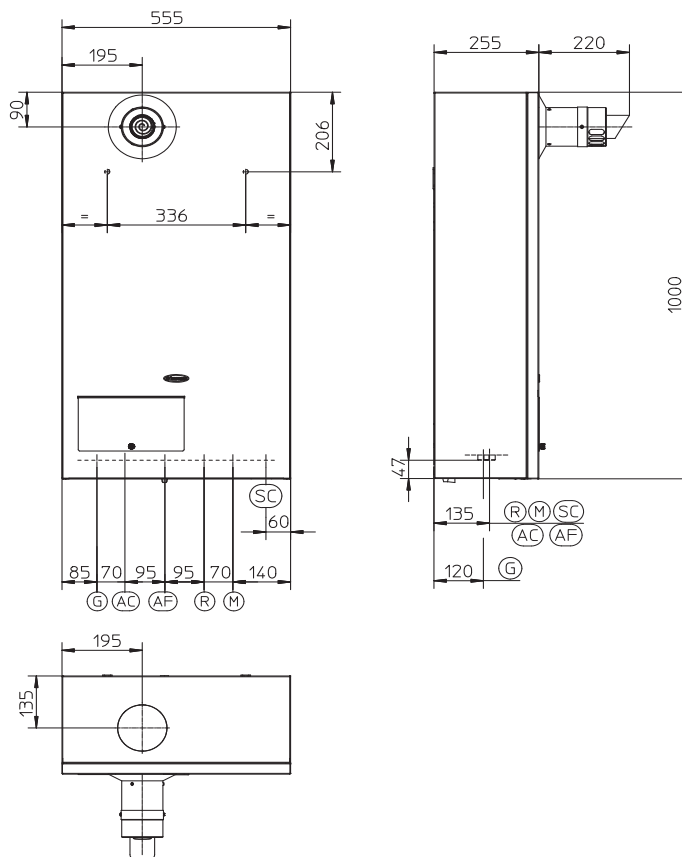
enquiries@huntheat.com.au



HUNT HEATING
The smart choice.

www.huntheat.com.au

Model	Code NG./LPG	C.H. heat output kW	Efficiency at nom. heat output	Protection index	Frost protection
HE 30 kW	IMG HE 30+C E NG IMG HE 30+C E LP	35	96.5%	IPX5D	-5°C
COMBUSTION PARAMETERS					
				NG (G20)	LPG (G30)
Supply Pressure		kPa		1.0	2.8
Flue temperature at nominal output		°C		67	68
TECHNICAL DATA					
Heat output NG			mJ/h (kW)	126 (34.9)	
Heat output LPG			mJ/h (kW)	130 (34.9)	
Burner pressure maximum NG/LPG			kPa	0.70/2.10	
Burner pressure minimum NG/LPG			kPa	0.19/0.55	
Efficiency 80/60 Nom./Min.			%	96.5/92.9	
Specific flow rate (Δt 25°C)			l/min	20	
Adjustable central heating temperature			°C	35-85	
Expansion vessel factory-set pressure			bar	1	
Pressure relief setting			bar (psi)	3 (44)	
Expansion vessel capacity			L	10	
Head available with 1000 l/h flow rate			kPa (m H ₂ O)	30.2 (3.1)	
Electrical connection			V/Hz	230/50	
Installed electric power			W	175	
Maximum flue length 60/100			m	V 4.7 / H 3.0	
Maximum flue length 80/125			m	V 12.2 / H 7.3	
Maximum flue length 80/80			m	V 40 / H 20	



Key:
 G - Gas supply
 AC - Domestic hot water outlet
 AF - Domestic cold water inlet
 R - System return
 M - System delivery
 SC - Condensate drain
 (minimum internal diameter Ø13 mm)

GAS	DOMESTIC HOT WATER		SYSTEM	
	AC	AF	R	M
3/4"	1/2"	1/2"	3/4"	3/4"

