

IMMERGAS HE EXTERNAL BOILER

MANUFACTURED BY:

 **IMMERGAS**

Wall-hung condensing boiler for outdoor installation, for high temperature.

- Heat output of 35 kW
- Compact dimensions
- Pre-arranged for functioning in multi-zone heating systems
- Easy to use boiler interface
- Automatic system by-pass
- Diagnostic and performance display
- Intelligent External Controller CARV2 with outside sensor (optional)
- Horizontal flue kit as standard
- High performance Grundfos 7m pump
- Available in Natural Gas and Universal LPG Models



HUNT
HEATING

2 YEAR*
WARRANTY



MAIN OPTIONS

CARV2 - 3.021395
External Sensor - 3.014083
Anti-freeze protection (-15°C) - 3.017324.

MEASUREMENTS

1000 x 555 x 255 (H x W x D) mm
Empty appliance weight - 45 kg.

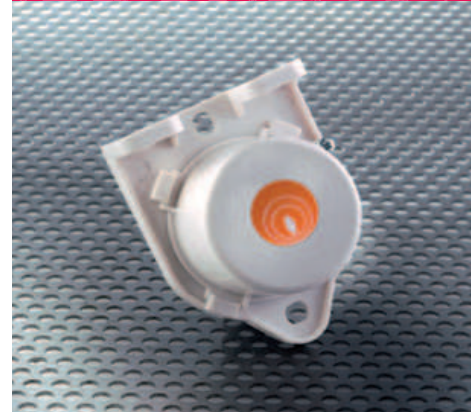
OPTIONAL FLUE KITS

Vertical concentric kit 60/100 - 3.023758.

CARV2



EXTERNAL SENSOR



 **SAI GLOBAL**

SHOWROOM

11 Fiveways Boulevard
Keysborough
VIC 3173

PHONE 1300 00 1800

FAX (+613) 9798 5133

enquiries@huntheat.com.au



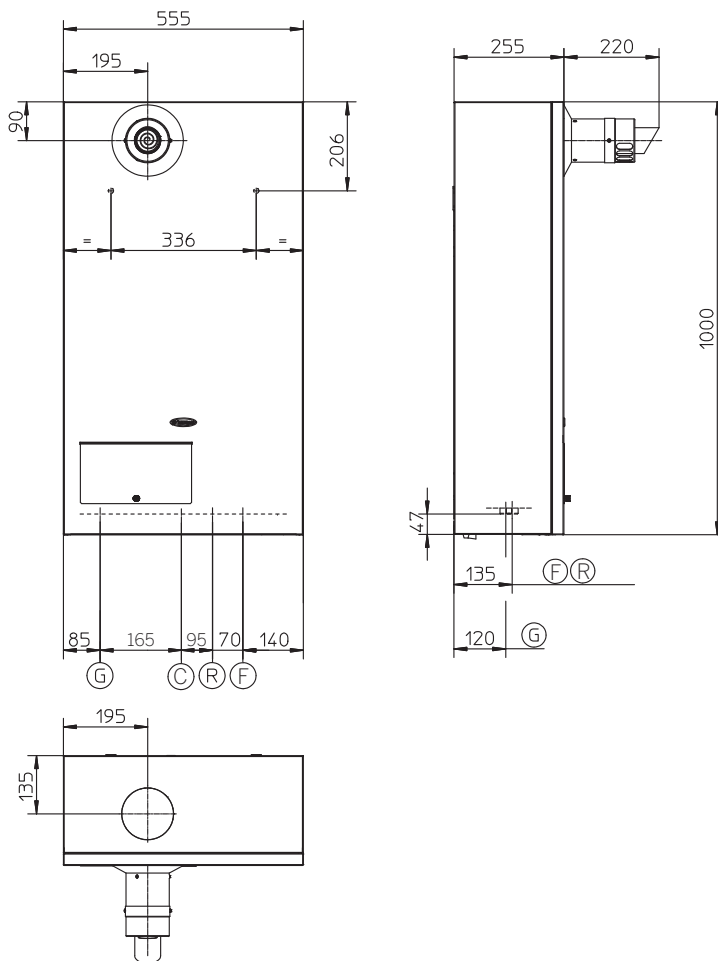
HUNT HEATING
The smart choice.

www.huntheat.com.au

Model	Code NG./LPG	C.H. heat output kW	Efficiency at nom. heat output	Protection index	Frost protection
HE 30 kW	IMG HE 30+ E NG IMG HE 30+ E LPG	35	96.5%	IPX5D	-5°C

COMBUSTION PARAMETERS			
		NG (G20)	LPG (G30)
Supply Pressure	kPa	1.0	2.8
Flue temperature at nominal output	°C	67	68

TECHNICAL DATA		
Heat output NG	mJ/h (kW)	126 (34.9)
Heat output LPG	mJ/h (kW)	130 (34.9)
Burner pressure maximum NG/LPG	kPa	0.70/2.10
Burner pressure minimum NG/LPG	kPa	0.19/0.55
Efficiency 80/60 Nom./Min.	%	96.5/92.9
Efficiency 50/30 Nom./Min.	%	102.0/99.1
Adjustable central heating temperature	°C	35-85
Expansion vessel factory-set pressure	bar	1
Pressure relief setting	bar (psi)	3 (44)
Expansion vessel capacity	L	10
Head available with 1000 l/h flow rate	kPa (m H ₂ O)	30.2 (3.1)
Electrical connection	V/Hz	230/50
Installed electric power	W	175



Key:
 G - Gas supply
 R - Return - CH
 F - Flow - CH
 C - Cold fill

Height (mm)	Width (mm)	Depth (mm)
1000	555	255
CONNECTIONS		
COLD INLET	GAS	SYSTEM
C	G	R F
1/2"	3/4"	3/4" 3/4"

